




## Safelink Solo Compact 150 Supreme

The Safelink SOLO Compact Supreme 150 Heavy Duty Wipe clean lifejacket is integrated with the Kannad Safelink SOLO Personal Locator Beacon.

 <p>150N</p>	
<p>EN ISO 12402-3/6</p>	<p>EN ISO 12401</p> <p>Deck Safety Harness</p>

# SAFELINK SOLO COMPACT 150 SUPREME

3MX8

## KEY FEATURES:

- High abrasion resistance fabric reinforced with additional high abrasion resistance 'Tektor' fabric around the sides and lower edges of the cover to prevent damage.
- Durable wipe clean PVC reinforcement
- To increase comfort and avoid irritation to the neck there is a comfort collar padding to the back of the neck.
- Mesh back feature for better stability in wear and in-water plus improves weight dispersal & reduces pressure on back of neck for added comfort.
- Zip cover fastening with burst point at centre back neck. Added protective cover over zip to reduce possibility of water ingress leading to inadvertent inflation/protects zip from abrasion and damage.
- Marine grade stainless steel interlocking belt buckles and D-ring approved as deck safety harness for attachment of safety line.
- Detachable crutch strap
- Inflation system operational readiness indicator window on the back.
- ID numbers for serial numbers of both PFD and PLB displayed on a waterproof ID card inserted in a window pocket on the left back.
- Service date information window on the back

## INFLATABLE BLADDER:

- Single chamber
- Oral inflation tube
- SOLAS approved retro-reflective tape on bladder
- Red recovery grab strap on bladder marked "LIFT"
- 38g CO<sub>2</sub> gas cylinder
- Automatic water-activated SOLAS S.O.S. light
- New inflation system – less chance of inadvertent inflation / smoother design to minimize abrasion on cover & bladder.
- Marine grade whistle

## ACTUAL BUOYANCY:

172N

## AVAILABLE SIZES:

- Universal

## CERTIFIED:

- EN ISO 12402-3 : 2006 +A1 : 2010 ; EN ISO 12402-6:2006 + A1:2010 for inflatable lifejackets performance level 150
- EN ISO 12401 : 2009

## COLOUR:

- RS0 Red

## PERSONAL LOCATOR BEACON:

The Safelink Solo beacon works by transmitting an emergency frequency signal via the 406 MHz frequency. The beacon must be activated by the wearer when the lifejacket is inflated.

### MULLION BELGIUM

Export office  
Fabriekstraat 23  
8850 Ardooie  
Belgium  
T +32 (0)51 74 15 02  
info@mullion-pfd.com

### MULLION UK

Altham Lane  
Altham, Accrington  
Lancashire BB5 5YA  
United Kingdom  
T +32 (0)51 740 830  
unitedkingdom@mullion-pfd.com

### MULLION IRELAND

Cweedore Business Park  
Derrybeg, Co. Donegal  
Ireland  
T +353 (0)74 95 31 169  
ireland@mullion-pfd.com



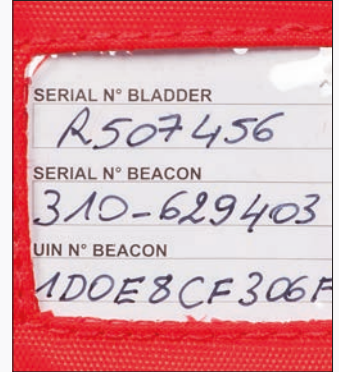
Discover  
our products

© 2020 Mullion Survival Technology Ltd - Maritime Safety Suits & Lifejackets

Please note that all information given in this document is intended to be useful and informative and is correct to the best of our knowledge at time of print. No liability can be accepted for inaccuracies or omissions. The right is reserved to amend this information without prior notice. All our technical files, style descriptions, presentations, designs and drawings, give the latest update of the standards and design or style features of each product. However, delivered products may comply with previous standards, design or style features. For that Sioen disclaims any liability whatsoever. Contact our sales for full information if specific requirements are needed.

# SAFELINK SOLO COMPACT 150 SUPREME

3MX8



## MULLION BELGIUM

Export office  
Fabriekstraat 23  
8850 Ardooie  
Belgium  
T +32 (0)51 74 15 02  
info@mullion-pfd.com

## MULLION UK

Altham Lane  
Altham, Accrington  
Lancashire BB5 5YA  
United Kingdom  
T +32 (0)51 740 830  
unitedkingdom@mullion-pfd.com

## MULLION IRELAND

Cweedore Business Park  
Derrybeg, Co. Donegal  
Ireland  
T +353 (0)74 95 31 169  
ireland@mullion-pfd.com



Discover  
our products

© 2020 Mullion Survival Technology Ltd - Maritime Safety Suits & Lifejackets

Please note that all information given in this document is intended to be useful and informative and is correct to the best of our knowledge at time of print. No liability can be accepted for inaccuracies or omissions. The right is reserved to amend this information without prior notice. All our technical files, style descriptions, presentations, designs and drawings, give the latest update of the standards and design or style features of each product. However, delivered products may comply with previous standards, design or style features. For that Sioen disclaims any liability whatsoever. Contact our sales for full information if specific requirements are needed.